



Roberts Lab_2011-03-14 13-01-59_CC009827.pcrd

3/14/2011 5:02 PM

Report Information

User: BioRad/Roberts Lab
Data File Name: Roberts Lab_2011-03-14 13-01-59_CC009827.pcrd
Data File Path: C:\Users\srlab\Documents\My Dropbox\Roberts Lab CFX96 Data (7)\Sam
Well Group Name: All Wells
Report Differs from Last Save: No

Notes

Run Setup

Run Information

Run User: Roberts Lab
Run Date: 3/14/2011 1:02 PM
ID:
Notes: Post-run note: Wells B09 and H09 exhibit weird melt curves.
Sample Volume: 25
Temperature Control Mode: Calculated
Lid Temperature: 105
Base Serial Number: CC009827
Optical Head Serial Number: 785BR3659

Protocol

1: 95.0°C for 10:00
2: 95.0°C for 0:15
3: 55.0°C for 0:15
4: 72.0°C for 0:30
Plate Read
5: GOTO 2, 39 more times
6: 95.0°C for 0:10
7: Melt Curve 65.0°C to 95.0°C : Increment 0.5°C 0:05
Plate Read

Plate Display

	1	2	3	4	5	6	7	8	9	10	11	12
A	Unk HMGP BB01	Unk HMGP BB12	Unk HMGP DH01	Unk HMGP DH09	Unk HMGP DH17		Unk TIMP3(BB) BB01	Unk TIMP3(BB) BB12	Unk TIMP3(BB) DH01	Unk TIMP3(BB) DH09	Unk TIMP3(BB) DH17	
B	Unk HMGP BB03	Unk HMGP BB13	Unk HMGP DH02	Unk HMGP DH10	Unk HMGP DH18		Unk TIMP3(BB) BB03	Unk TIMP3(BB) BB13	Unk TIMP3(BB) DH02	Unk TIMP3(BB) DH10	Unk TIMP3(BB) DH18	

	1	2	3	4	5	6	7	8	9	10	11	12
C	Unk HMGP BB04	Unk HMGP BB14	Unk HMGP DH03	Unk HMGP DH11	Unk HMGP DH19		Unk TIMP3(BB) BB04	Unk TIMP3(BB) BB14	Unk TIMP3(BB) DH03	Unk TIMP3(BB) DH11	Unk TIMP3(BB) DH19	
D	Unk HMGP BB07	Unk HMGP BB16	Unk HMGP DH04	Unk HMGP DH12	Unk HMGP DH20		Unk TIMP3(BB) BB07	Unk TIMP3(BB) BB16	Unk TIMP3(BB) DH04	Unk TIMP3(BB) DH12	Unk TIMP3(BB) DH20	
E	Unk HMGP BB08	Unk HMGP BB17	Unk HMGP DH05	Unk HMGP DH13	NTC HMGP		Unk TIMP3(BB) BB08	Unk TIMP3(BB) BB17	Unk TIMP3(BB) DH05	Unk TIMP3(BB) DH13	NTC TIMP3(BB)	
F	Unk HMGP BB09	Unk HMGP BB18	Unk HMGP DH06	Unk HMGP DH14	NTC HMGP		Unk TIMP3(BB) BB09	Unk TIMP3(BB) BB18	Unk TIMP3(BB) DH06	Unk TIMP3(BB) DH14	NTC TIMP3(BB)	
G	Unk HMGP BB10	Unk HMGP BB19	Unk HMGP DH07	Unk HMGP DH15	NTC HMGP		Unk TIMP3(BB) BB10	Unk TIMP3(BB) BB19	Unk TIMP3(BB) DH07	Unk TIMP3(BB) DH15	NTC TIMP3(BB)	
H	Unk HMGP BB11	Unk HMGP BB20	Unk HMGP DH08	Unk HMGP DH16	NTC HMGP		Unk TIMP3(BB) BB11	Unk TIMP3(BB) BB20	Unk TIMP3(BB) DH08	Unk TIMP3(BB) DH16	NTC TIMP3(BB)	

Quantification

Step #: 4

Analysis Mode: Fluorophore

Cq Determination: Single Threshold

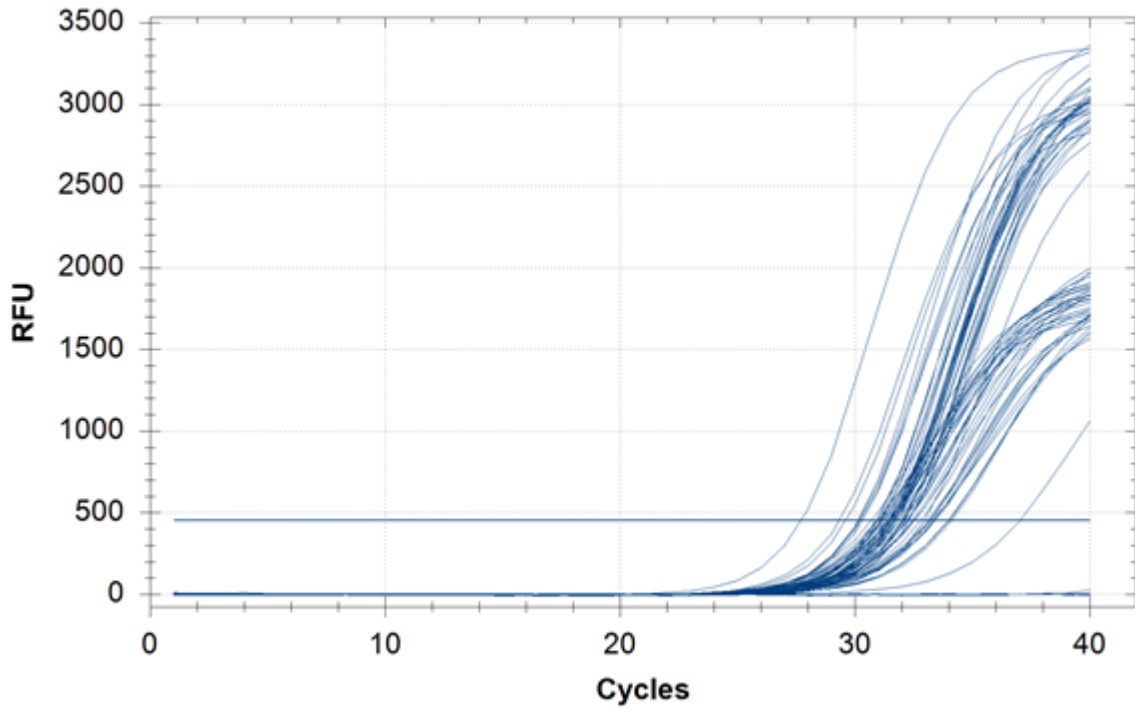
Baseline Method:

FAM: Auto Calculated

Threshold Setting:

FAM: 455.30, Auto Calculated

Amplification



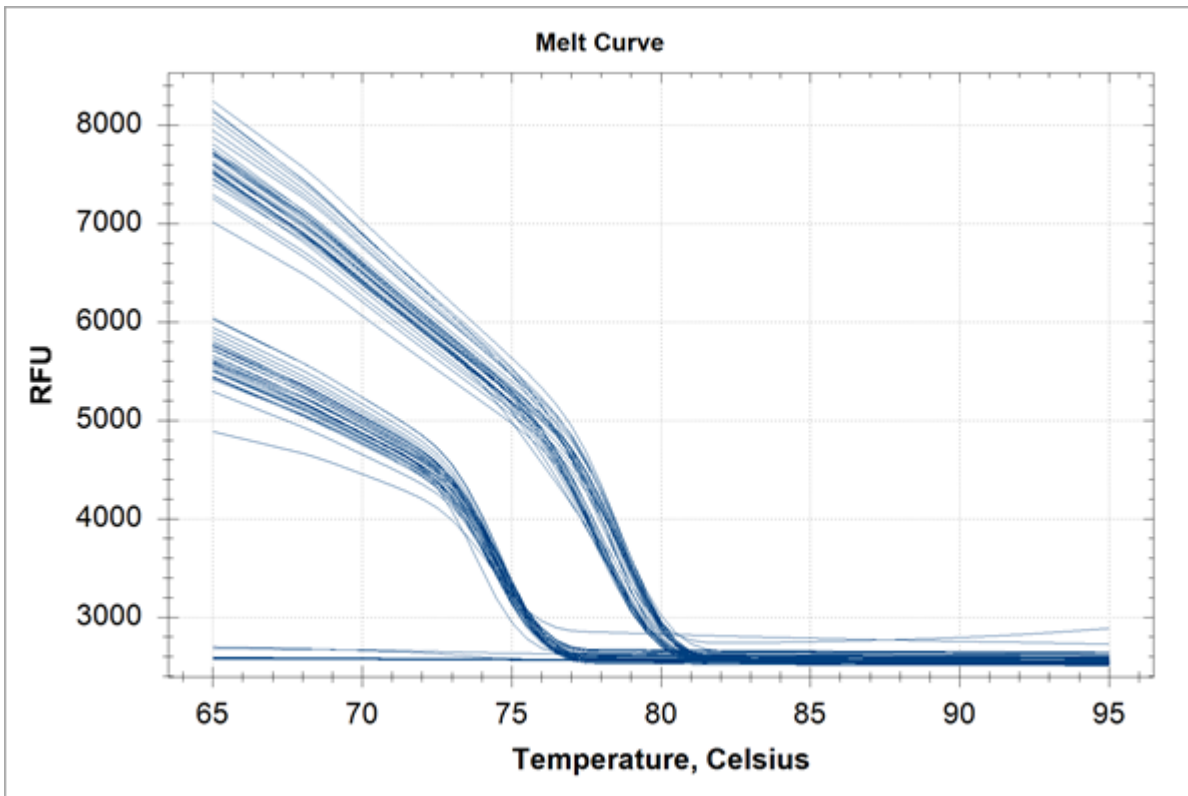
Quantification Data

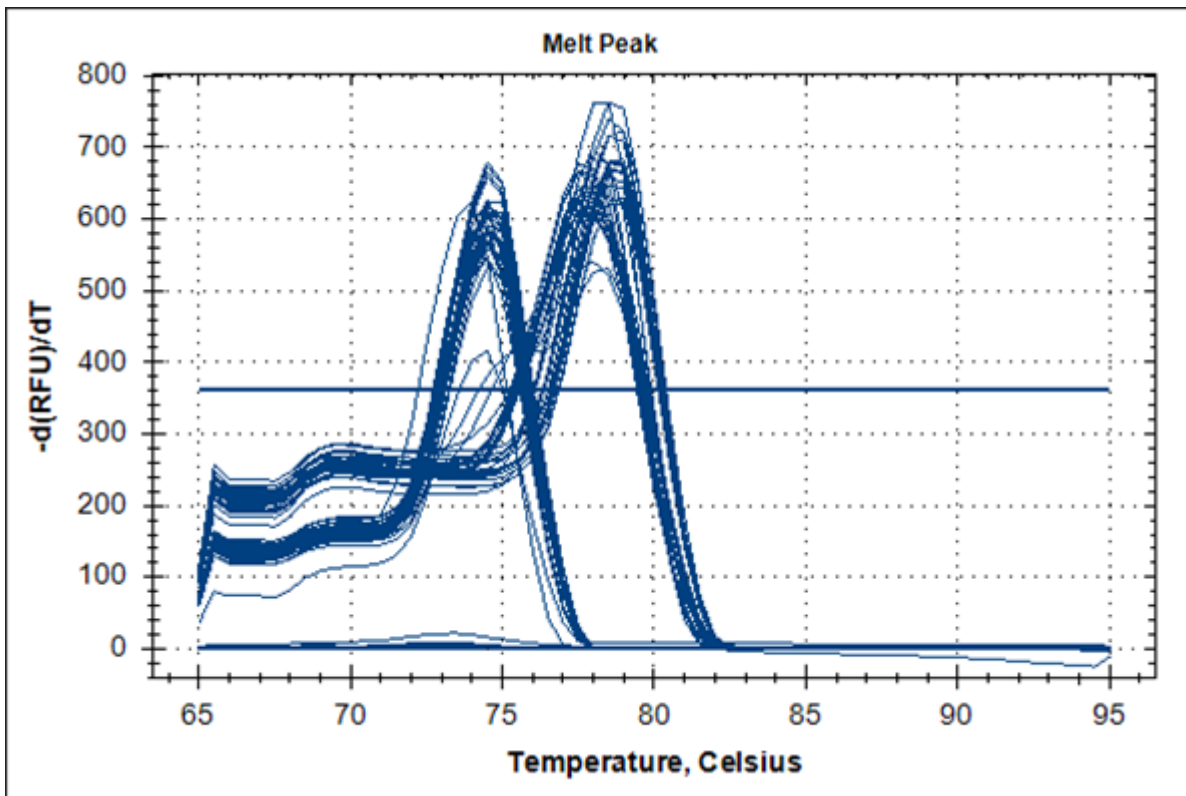
Well	Fluor	Target	Content	Sample	Cq	Cq Mean	Cq Std. Dev
A01	FAM	HMGP	Unkn	BB01	N/A	0.00	0.000
A02	FAM	HMGP	Unkn	BB12	32.53	32.53	0.000
A03	FAM	HMGP	Unkn	DH01	34.11	34.11	0.000
A04	FAM	HMGP	Unkn	DH09	31.30	31.30	0.000
A05	FAM	HMGP	Unkn	DH17	32.23	32.23	0.000
A07	FAM	TIMP3(BB)	Unkn	BB01	N/A	0.00	0.000
A08	FAM	TIMP3(BB)	Unkn	BB12	31.63	31.63	0.000
A09	FAM	TIMP3(BB)	Unkn	DH01	31.29	31.29	0.000
A10	FAM	TIMP3(BB)	Unkn	DH09	30.23	30.23	0.000
A11	FAM	TIMP3(BB)	Unkn	DH17	29.32	29.32	0.000
B01	FAM	HMGP	Unkn	BB03	33.98	33.98	0.000
B02	FAM	HMGP	Unkn	BB13	31.70	31.70	0.000
B03	FAM	HMGP	Unkn	DH02	33.41	33.41	0.000
B04	FAM	HMGP	Unkn	DH10	31.98	31.98	0.000
B05	FAM	HMGP	Unkn	DH18	32.21	32.21	0.000
B07	FAM	TIMP3(BB)	Unkn	BB03	32.28	32.28	0.000
B08	FAM	TIMP3(BB)	Unkn	BB13	30.13	30.13	0.000
B09	FAM	TIMP3(BB)	Unkn	DH02	32.14	32.14	0.000
B10	FAM	TIMP3(BB)	Unkn	DH10	31.13	31.13	0.000
B11	FAM	TIMP3(BB)	Unkn	DH18	32.95	32.95	0.000
C01	FAM	HMGP	Unkn	BB04	31.39	31.39	0.000
C02	FAM	HMGP	Unkn	BB14	31.21	31.21	0.000
C03	FAM	HMGP	Unkn	DH03	32.80	32.80	0.000
C04	FAM	HMGP	Unkn	DH11	31.54	31.54	0.000
C05	FAM	HMGP	Unkn	DH19	33.19	33.19	0.000
C07	FAM	TIMP3(BB)	Unkn	BB04	31.49	31.49	0.000
C08	FAM	TIMP3(BB)	Unkn	BB14	31.54	31.54	0.000
C09	FAM	TIMP3(BB)	Unkn	DH03	31.84	31.84	0.000
C10	FAM	TIMP3(BB)	Unkn	DH11	31.12	31.12	0.000
C11	FAM	TIMP3(BB)	Unkn	DH19	31.41	31.41	0.000
D01	FAM	HMGP	Unkn	BB07	32.08	32.08	0.000
D02	FAM	HMGP	Unkn	BB16	31.14	31.14	0.000
D03	FAM	HMGP	Unkn	DH04	33.20	33.20	0.000
D04	FAM	HMGP	Unkn	DH12	31.41	31.41	0.000
D05	FAM	HMGP	Unkn	DH20	32.43	32.43	0.000
D07	FAM	TIMP3(BB)	Unkn	BB07	32.06	32.06	0.000
D08	FAM	TIMP3(BB)	Unkn	BB16	32.29	32.29	0.000
D09	FAM	TIMP3(BB)	Unkn	DH04	32.07	32.07	0.000
D10	FAM	TIMP3(BB)	Unkn	DH12	31.68	31.68	0.000
D11	FAM	TIMP3(BB)	Unkn	DH20	31.60	31.60	0.000
E01	FAM	HMGP	Unkn	BB08	31.39	31.39	0.000
E02	FAM	HMGP	Unkn	BB17	30.70	30.70	0.000
E03	FAM	HMGP	Unkn	DH05	33.23	33.23	0.000
E04	FAM	HMGP	Unkn	DH13	32.51	32.51	0.000
E05	FAM	HMGP	NTC		N/A	0.00	0.000
E07	FAM	TIMP3(BB)	Unkn	BB08	31.54	31.54	0.000
E08	FAM	TIMP3(BB)	Unkn	BB17	30.17	30.17	0.000

Well	Fluor	Target	Content	Sample	Cq	Cq Mean	Cq Std. Dev
E09	FAM	TIMP3(BB)	Unkn	DH05	31.75	31.75	0.000
E10	FAM	TIMP3(BB)	Unkn	DH13	32.05	32.05	0.000
E11	FAM	TIMP3(BB)	NTC		N/A	0.00	0.000
F01	FAM	HMGP	Unkn	BB09	31.47	31.47	0.000
F02	FAM	HMGP	Unkn	BB18	31.04	31.04	0.000
F03	FAM	HMGP	Unkn	DH06	33.38	33.38	0.000
F04	FAM	HMGP	Unkn	DH14	31.86	31.86	0.000
F05	FAM	HMGP	NTC		N/A	0.00	0.000
F07	FAM	TIMP3(BB)	Unkn	BB09	29.59	29.59	0.000
F08	FAM	TIMP3(BB)	Unkn	BB18	31.02	31.02	0.000
F09	FAM	TIMP3(BB)	Unkn	DH06	31.47	31.47	0.000
F10	FAM	TIMP3(BB)	Unkn	DH14	31.73	31.73	0.000
F11	FAM	TIMP3(BB)	NTC		N/A	0.00	0.000
G01	FAM	HMGP	Unkn	BB10	33.32	33.32	0.000
G02	FAM	HMGP	Unkn	BB19	33.08	33.08	0.000
G03	FAM	HMGP	Unkn	DH07	34.02	34.02	0.000
G04	FAM	HMGP	Unkn	DH15	37.03	37.03	0.000
G05	FAM	HMGP	NTC		N/A	0.00	0.000
G07	FAM	TIMP3(BB)	Unkn	BB10	31.41	31.41	0.000
G08	FAM	TIMP3(BB)	Unkn	BB19	27.70	27.70	0.000
G09	FAM	TIMP3(BB)	Unkn	DH07	32.03	32.03	0.000
G10	FAM	TIMP3(BB)	Unkn	DH15	31.08	31.08	0.000
G11	FAM	TIMP3(BB)	NTC		N/A	0.00	0.000
H01	FAM	HMGP	Unkn	BB11	31.54	31.54	0.000
H02	FAM	HMGP	Unkn	BB20	31.13	31.13	0.000
H03	FAM	HMGP	Unkn	DH08	33.17	33.17	0.000
H04	FAM	HMGP	Unkn	DH16	30.97	30.97	0.000
H05	FAM	HMGP	NTC		N/A	0.00	0.000
H07	FAM	TIMP3(BB)	Unkn	BB11	30.89	30.89	0.000
H08	FAM	TIMP3(BB)	Unkn	BB20	30.91	30.91	0.000
H09	FAM	TIMP3(BB)	Unkn	DH08	30.30	30.30	0.000
H10	FAM	TIMP3(BB)	Unkn	DH16	31.49	31.49	0.000
H11	FAM	TIMP3(BB)	NTC		N/A	0.00	0.000

Melt Curve

Step #: 7





Melt Curve Data

Well	Fluor	Target	Content	Sample	Melt Temp
A01	FAM	HMGP	Unkn	BB01	None
A02	FAM	HMGP	Unkn	BB12	74.50
A03	FAM	HMGP	Unkn	DH01	74.50
A04	FAM	HMGP	Unkn	DH09	74.50
A05	FAM	HMGP	Unkn	DH17	74.50
A07	FAM	TIMP3(BB)	Unkn	BB01	None
A08	FAM	TIMP3(BB)	Unkn	BB12	77.50
A09	FAM	TIMP3(BB)	Unkn	DH01	79.00
A10	FAM	TIMP3(BB)	Unkn	DH09	79.00
A11	FAM	TIMP3(BB)	Unkn	DH17	77.50
B01	FAM	HMGP	Unkn	BB03	74.50
B02	FAM	HMGP	Unkn	BB13	74.50
B03	FAM	HMGP	Unkn	DH02	74.50
B04	FAM	HMGP	Unkn	DH10	74.50
B05	FAM	HMGP	Unkn	DH18	74.50
B07	FAM	TIMP3(BB)	Unkn	BB03	78.50
B08	FAM	TIMP3(BB)	Unkn	BB13	78.50
B09	FAM	TIMP3(BB)	Unkn	DH02	78.50
B10	FAM	TIMP3(BB)	Unkn	DH10	78.00
B11	FAM	TIMP3(BB)	Unkn	DH18	78.00
C01	FAM	HMGP	Unkn	BB04	74.50
C02	FAM	HMGP	Unkn	BB14	74.50
C03	FAM	HMGP	Unkn	DH03	74.50
C04	FAM	HMGP	Unkn	DH11	74.50
C05	FAM	HMGP	Unkn	DH19	74.50

Well	Fluor	Target	Content	Sample	Melt Temp
C07	FAM	TIMP3(BB)	Unkn	BB04	77.50
C08	FAM	TIMP3(BB)	Unkn	BB14	77.50
C09	FAM	TIMP3(BB)	Unkn	DH03	77.50
C10	FAM	TIMP3(BB)	Unkn	DH11	78.50
C11	FAM	TIMP3(BB)	Unkn	DH19	78.50
D01	FAM	HMGP	Unkn	BB07	75.00
D02	FAM	HMGP	Unkn	BB16	74.50
D03	FAM	HMGP	Unkn	DH04	74.50
D04	FAM	HMGP	Unkn	DH12	74.50
D05	FAM	HMGP	Unkn	DH20	74.50
D07	FAM	TIMP3(BB)	Unkn	BB07	78.00
D08	FAM	TIMP3(BB)	Unkn	BB16	77.50
D09	FAM	TIMP3(BB)	Unkn	DH04	79.00
D10	FAM	TIMP3(BB)	Unkn	DH12	79.00
D11	FAM	TIMP3(BB)	Unkn	DH20	78.00
E01	FAM	HMGP	Unkn	BB08	75.00
E02	FAM	HMGP	Unkn	BB17	74.50
E03	FAM	HMGP	Unkn	DH05	74.00
E04	FAM	HMGP	Unkn	DH13	74.50
E05	FAM	HMGP	NTC		None
E07	FAM	TIMP3(BB)	Unkn	BB08	78.50
E08	FAM	TIMP3(BB)	Unkn	BB17	78.50
E09	FAM	TIMP3(BB)	Unkn	DH05	77.50
E10	FAM	TIMP3(BB)	Unkn	DH13	78.50
E11	FAM	TIMP3(BB)	NTC		None
F01	FAM	HMGP	Unkn	BB09	74.50
F02	FAM	HMGP	Unkn	BB18	74.50
F03	FAM	HMGP	Unkn	DH06	74.50
F04	FAM	HMGP	Unkn	DH14	74.50
F05	FAM	HMGP	NTC		None
F07	FAM	TIMP3(BB)	Unkn	BB09	78.50
F08	FAM	TIMP3(BB)	Unkn	BB18	78.50
F09	FAM	TIMP3(BB)	Unkn	DH06	78.50
F10	FAM	TIMP3(BB)	Unkn	DH14	78.50
F11	FAM	TIMP3(BB)	NTC		None
G01	FAM	HMGP	Unkn	BB10	74.50
G02	FAM	HMGP	Unkn	BB19	74.50
G03	FAM	HMGP	Unkn	DH07	74.50
G04	FAM	HMGP	Unkn	DH15	74.50
G05	FAM	HMGP	NTC		None
G07	FAM	TIMP3(BB)	Unkn	BB10	78.00
G08	FAM	TIMP3(BB)	Unkn	BB19	78.50
G09	FAM	TIMP3(BB)	Unkn	DH07	77.50
G10	FAM	TIMP3(BB)	Unkn	DH15	78.00
G11	FAM	TIMP3(BB)	NTC		None
H01	FAM	HMGP	Unkn	BB11	74.50
H02	FAM	HMGP	Unkn	BB20	74.50
H03	FAM	HMGP	Unkn	DH08	74.50
H04	FAM	HMGP	Unkn	DH16	74.50
H05	FAM	HMGP	NTC		None

Well	Fluor	Target	Content	Sample	Melt Temp
H07	FAM	TIMP3(BB)	Unkn	BB11	77.50
H08	FAM	TIMP3(BB)	Unkn	BB20	77.50
H09	FAM	TIMP3(BB)	Unkn	DH08	78.00
H10	FAM	TIMP3(BB)	Unkn	DH16	78.50
H11	FAM	TIMP3(BB)	NTC		None

QC Parameters

Description	Value	Use	Results	Exclude Wells	All excluded wells
Negative control with a Cq less than	38	True		False	
NTC with a Cq less than	38	True		False	
NRT with a Cq less than	38	True		False	
Positive control with a Cq greater than	30	True		False	
Unknown without a Cq	N/A	True	FAM:A1, A7.	False	
Standard without a Cq	N/A	True		False	
Efficiency greater than	110.0	True			
Efficiency less than	90.0	True			
Std Curve R ² less than	0.980	True			
Replicate group Cq Std Dev greater than	0.20	True		False	